

# DIT and CBRNE Asset Management

*How DIT leverages IBM Maximo® and Asset Visualization to manage CBRNE asset supply chain*

## ABOUT DIT

Distributed Information Technologies (DIT) is a minority-owned small business that provides a full range of IT Professional Services and specializes in the delivery of information technology solutions in the functional area of Enterprise Asset Management (EAM).

DIT provides EAM functional and process consulting, custom development and IBM® Maximo® implementation services to help our clients improve their operational and programmatic productivity and to provide high quality customer service.

Our EAM and Maximo clients include The National Park Service, The National Archives, The U.S. Army, The U.S. Marine Corps and Parks Canada Agency.

## Contact Information:

Steve Grosz  
(571) 483-2731  
[sbgrosz@dtcc.com](mailto:sbgrosz@dtcc.com)

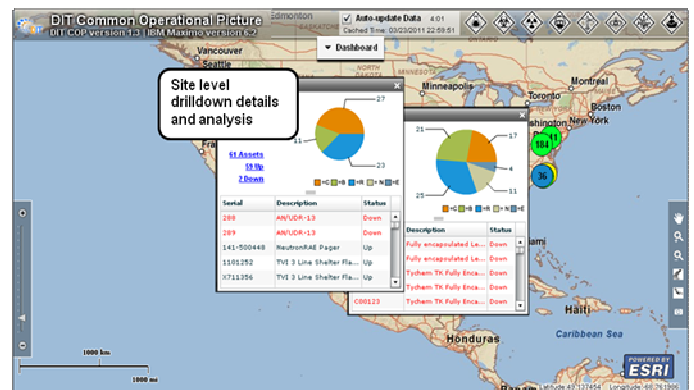
For more information on any of our products or services please visit us on the Web at:  
[www.dtcc.com](http://www.dtcc.com)

## The Solution

DIT leverages its asset management expertise to provide IT solutions and operational support to manage the supply chain, maintenance history and reliability tracking of CBRNE assets – from procurement through to disposal - for Contractor Logistics Support programs.

Our technical solution, based on the IBM Maximo® asset management suite, supports a comprehensive asset management process and asset accountability for a variety of CBRNE asset classes, such as those for:

- Detection
- Collective protection
- Medical
- Decontamination
- Sensor Networks
- Individual protective equipment



Easy to configure and implement, yet highly customizable, this solution provides increased asset visibility and automated, centralized control over the supply chain life cycle - from acquisition through to deployment and sustainment operations, including preventative and operational maintenance. A robust workflow engine supports critical logistics business processes with customizable, user-defined authorization paths, alerting and escalation handling. Our implementations have supported a full range of requirements, such as purchase order and vendor management, warranty tracking, inventory accounting and re-order, spare part tracking, item lot tracking, kitting and IUID asset tagging. The solution is easily extended to provide integrated support for RFID asset tracking and mobile capabilities for inventory, asset and work management.

To provide improved situational awareness, DIT offers a common operating picture (COP) designed to display critical asset data in an easy to understand geospatially-enabled dashboard. A more detailed overview of the COP is provided on the reverse side of this brochure.



## The Asset Supply Chain Management COP

Fully integrated with IBM Maximo®, but customizable for other asset management solutions, the COP leverages interactive, color-coded maps, charts and graphs that enable command level leadership, as well as asset managers, to make informed, real-time decisions regarding the status, availability, maintenance history and location of critical infrastructure assets.

Users can quickly toggle between high-level portfolio views or detailed drill downs for locations, assets or individual components. The COP provides the capability to zoom in on subsets of data filtered by factors such as geography, condition, utilization or mission dependency to view detailed information on work orders, repair history, asset availability, cost and inventory details.

Built on ESRI's highly extensible ArcGIS® API for the Adobe Flex® platform, DIT's COP can be easily customized to incorporate additional data points, filters and modeling scenarios to best meet your organization's unique requirements for viewing and analyzing your asset portfolio data. Through use of a Service Oriented Architecture (SOA) the COP can integrate with any asset management system and can seamlessly retrieve relevant data from external or legacy systems such as ERP, Enterprise GIS or Project Planning.

### Features

- Real-time aggregation and visualization of asset portfolio
- Interactive geographic-based mapping allows drill down from portfolio level views through to region, location and specific assets
- Executive-level dashboard for key metrics such as utilization, condition, value and mission dependency
- Split screen for comparing sub-portfolio subsets
- Ability to save filters and search criteria
- Ability to export visuals as well as data sets for inclusion in reports and presentations
- Fully integrated with IBM Maximo®, incorporating Maximo's security framework to control user access

### Benefits

- Presents a holistic, real-time view of the asset portfolio
- Serves as a single point of reference for asset data across the enterprise
- Provides a visual platform for assessing the overall status of critical assets
- Dashboard capability allows for real-time snapshot of asset portfolio metrics for the executive level
- Drives more value from the asset data your organization collects and manages

